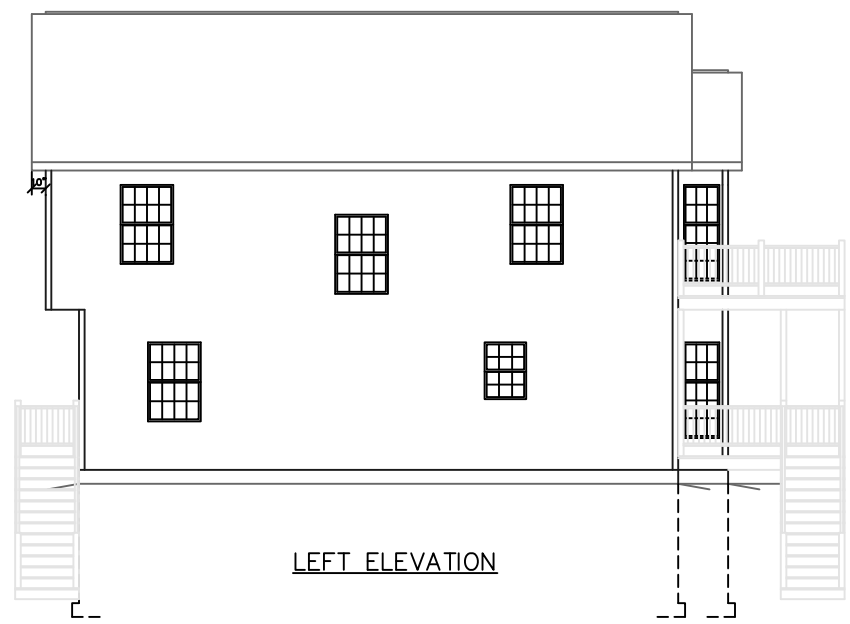
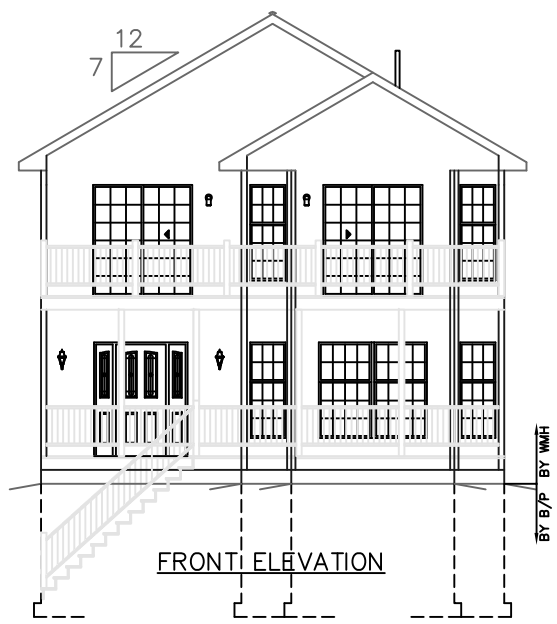


OVERHANG DIMENSION (*)			
ROOF PITCH	HOUSE WIDTH		
	24'-0"	26'-0"/30'-0"	27'-8"/31'-8"
5/12	16"	11"	16"
7/12	16"	11"	16"
9/12	12"	11"	12"
12/12	8 3/4"	8 3/4"	8 3/4"

NOTE:
WINDOW GRILLE PATTERNS SHOWN ARE FOR ANDERSEN WINDOWS.
GRILLE PATTERNS FOR OTHER MANUFACTURERS MAY BE DIFFERENT.

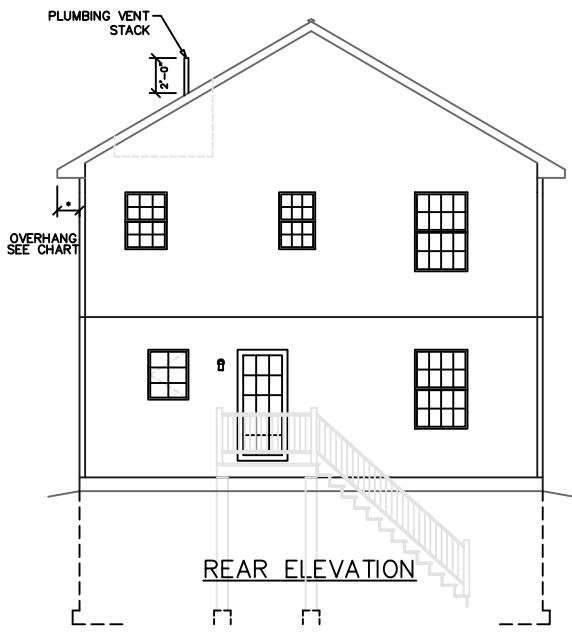


LEFT ELEVATION

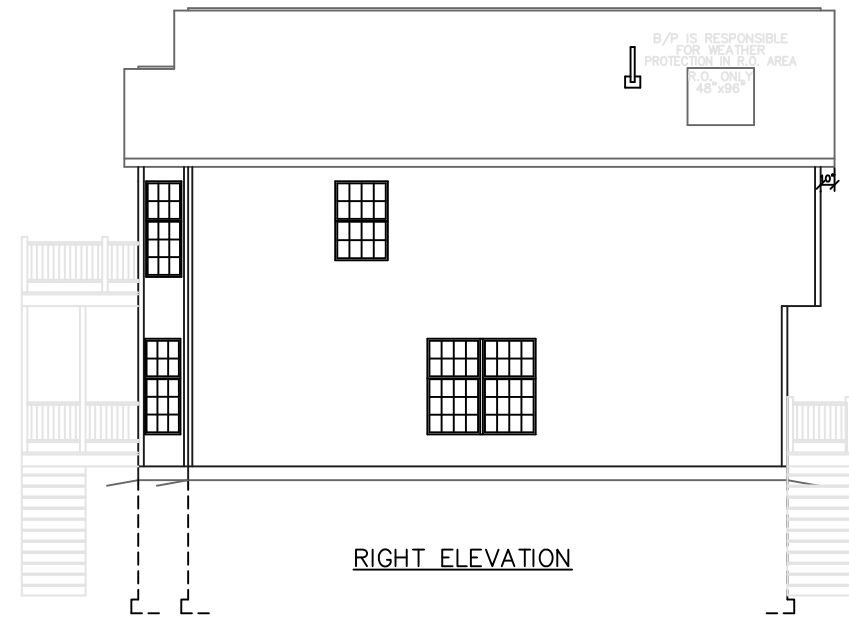


FRONT ELEVATION

ALL EXT. STAIRS, STEPS, RAILS & GUARDS TO BE DESIGNED, SUPPLIED AND INSTALLED BY B/P



REAR ELEVATION

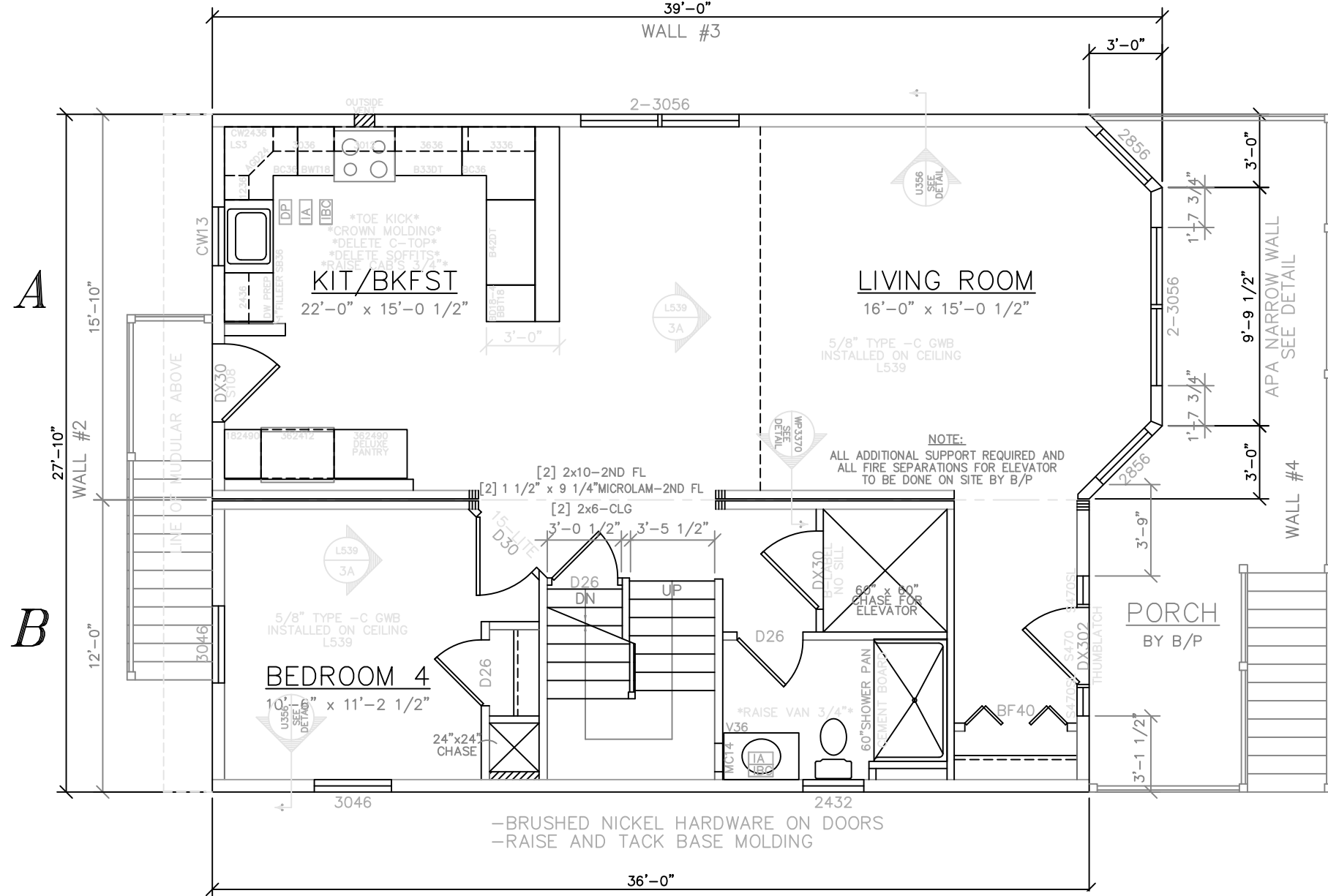


RIGHT ELEVATION

SEE STANDARD NOTES & DETAILS DWG #8

USE GROUP: R5	BUILDER: z	HOMEOWNER:	THIRD PARTY INSPECTION AGENCY:
CONST. TYPE: VA	1		PE / RA
DESIGNER: V. GIORGIO	REVISION:	SERIAL No. 06215	
DATE: 09/21/06	DATE: 12/12/06	PRODUCTION No. 5069	
SCALE: 1/8" = 1'-0"	DATE: 01/22/07		
PAGE: 1	CHECK:		
COLONIAL CTM-R ELEVATIONS 		Westchester Modular Homes Inc 30 Reagans Mill Road, Wingdale, New York, 12594 Tel (845)832-9400 Fax (845)832-6698	

LIGHT & VENTILATION SCHEDULE (SF)			
ROOM	AREA	LIGHT SUPPLIED	VENT SUPPLIED
LIVING ROOM	241	48.8	21.56
KIT/BKFST	331	31.0	25.5
BEDROOM 4	118	20.6	11.46



FRONT

SEE STANDARD NOTES & DETAILS DWG #8

USE GROUP: R5	BUILDER: HOMEOWNER:	SERIAL No. 06215	THIRD PARTY INSPECTION AGENCY
CONST. TYPE: VA		PRODUCTION No. 5069	PE / RA
DESIGNER: V.GIORGIO		REVISION	
DATE: 09/21/06		DATE: 12/12/06	
SCALE: 1/4" = 1'-0"		DATE: 01/22/07	
PAGE: 3A		CHECK	DATE
COLONIAL CTM-R FIRST FLOOR PLAN			
Westchester Modular Homes Inc 30 Reagans Mill Road, Wingdale, New York, 12594 Tel (845)832-9400 Fax (845)832-6698			

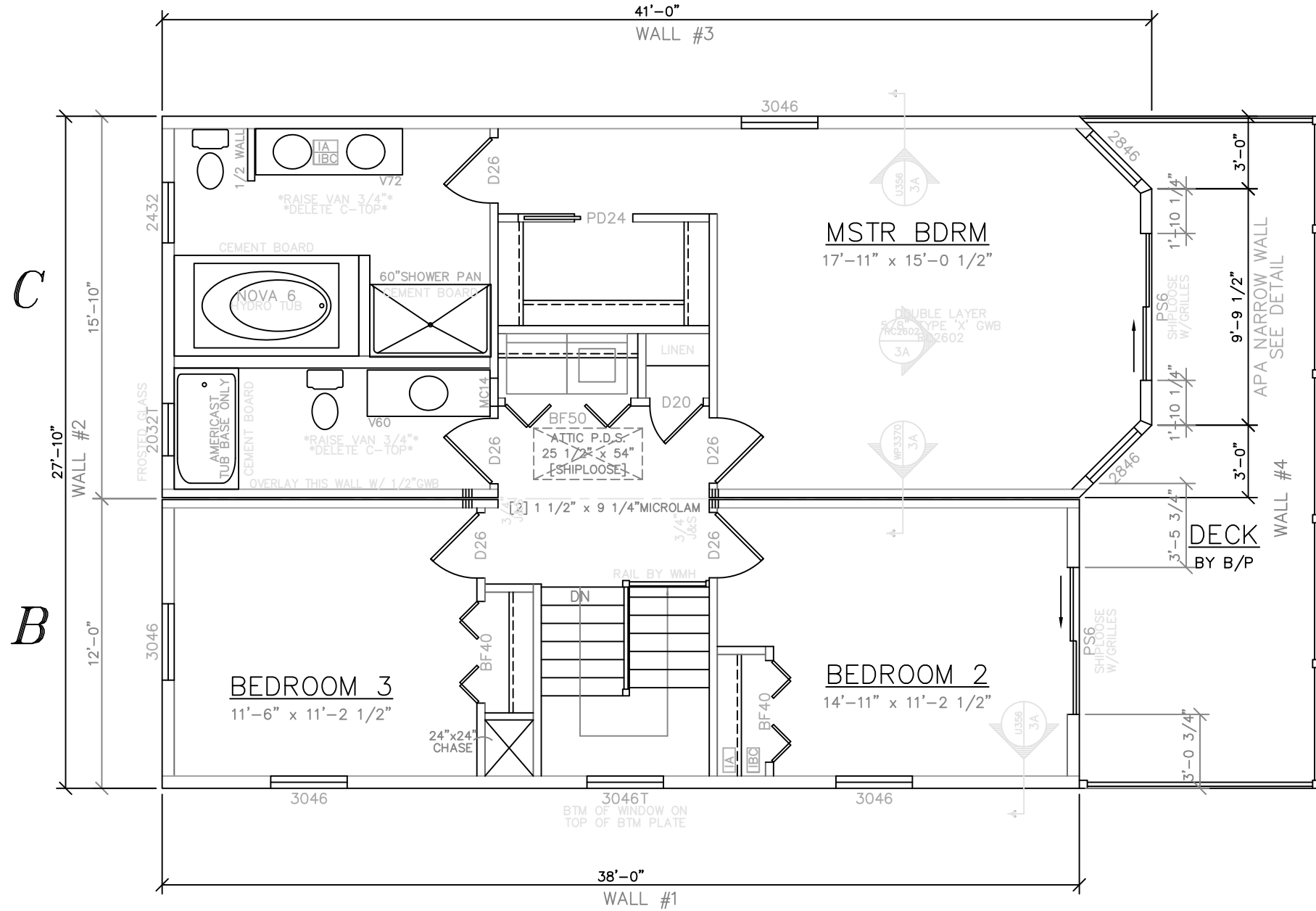
LIGHT & VENTILATION SCHEDULE (sf)			
ROOM	AREA	LIGHT SUPPLIED	VENT SUPPLIED
MSTR BDRM	269	54.8	25.66
BEDROOM 2	167	42.7	21.29
BEDROOM 3	129	20.6	11.46

WALL BRACING REQUIREMENTS 120 MPH WIND			
WALL	PERCENTAGE	REQUIRED	SUPPLIED
WALL #1	38'-0" x (20% x 0.8) =	6'-1"	28'-6"
WALL #2	27'-10" x (20% x 0.8) =	4'-5 1/2"	20'-0"
WALL #3	41'-0" x (20% x 0.8) =	6'-6 3/4"	34'-10"
WALL #4	27'-10" x (20% x 0.9) =	5'-0 1/8"	10'-3"

- * DESIGNED TO THE FOLLOWING:
 -2000 INTERNATIONAL RESIDENTIAL CODE, NJ AMENDMENTS
 -2003 NAPHCC NATIONAL STANDARD PLUMBING CODE, NJ AMENDMENTS
 -2002 NATIONAL ELECTRICAL CODE, NJ AMENDMENTS
 -1995 CABO MODEL ENERGY CODE, NJ AMENDMENTS

1096 SQ. FT. 1ST FLOOR

- BRUSHED NICKEL HARDWARE ON DOORS
 -RAISE AND TACK BASE MOLDING



FRONT

SEE STANDARD NOTES & DETAILS DWG #8

USE GROUP: R5

CONST. TYPE: 1

VA

DESIGNER: V. GIORGIO

DATE: 09/21/06

SCALE: 1/4" = 1'-0"

PAGE: 3B

BUILDER: Z E

HOMEOWNER:

COLONIAL CTM-R
SECOND FLOOR PLAN



Westchester Modular Homes Inc
 30 Reagans Mill Road, Wingdale, New York, 12594
 Tel (845)832-9400 Fax (845)832-6698

SERIAL No. 06215

PRODUCTION No. 5069

REVISION

DATE

12/12/06

01/22/07

CHECK

DATE

DATE

PE / RA

THIRD PARTY INSPECTION AGENCY