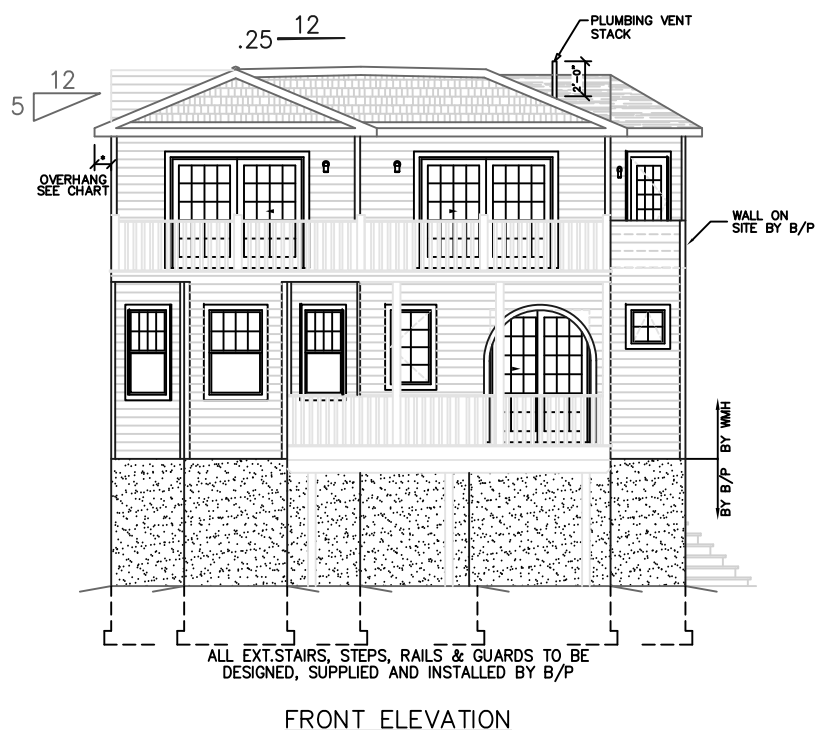
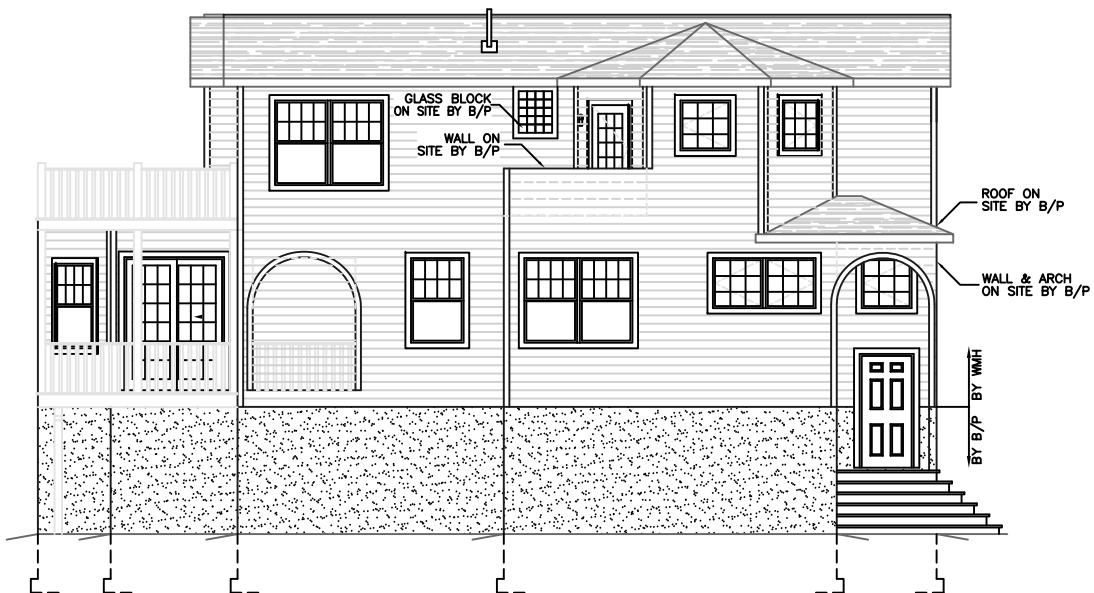


OVERHANG DIMENSION (*)			
ROOF PITCH	HOUSE WIDTH		
	24'-0"	26'-0"/30'-0"	27'-8"/31'-8"
5/12	16"	11"	16"
7/12	16"	11"	16"
9/12	12"	11"	12"
12/12	8 3/4"	8 3/4"	8 3/4"



ALL EXT. STAIRS, STEPS, RAILS & GUARDS TO BE DESIGNED, SUPPLIED AND INSTALLED BY B/P

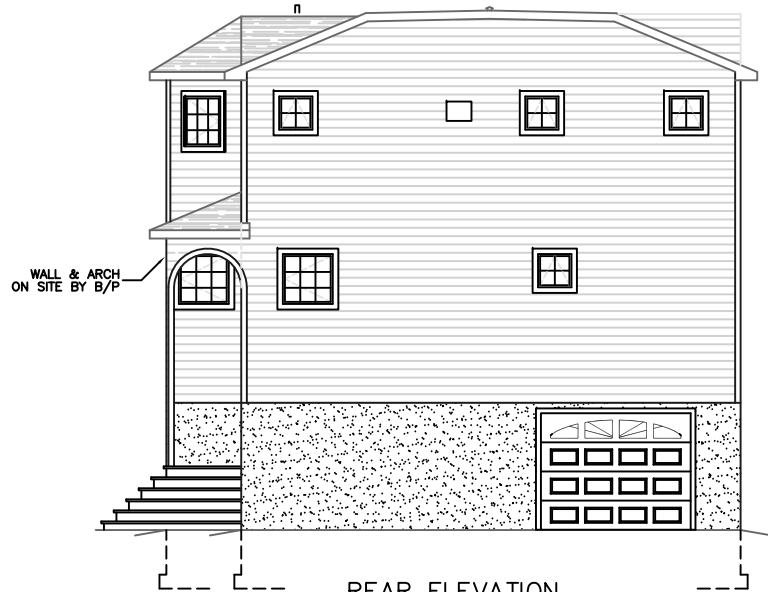
FRONT ELEVATION



RIGHT ELEVATION



LEFT ELEVATION



REAR ELEVATION

SEE STANDARD NOTES & DETAILS DWG #8

USE GROUP: R5	BUILDER: HOMEOWNER:	SERIAL No. 11157	THIRD PARTY INSPECTION AGENCY
CONST. TYPE: VB		PRODUCTION No. 5909	PE / RA
DESIGNER: V. GIORGIO		REVISION	
DATE: 01/04/12		DATE	
SCALE: 1/8" = 1'-0"		CHECK	
PAGE: 1		V. GIORGIO	10/12/07

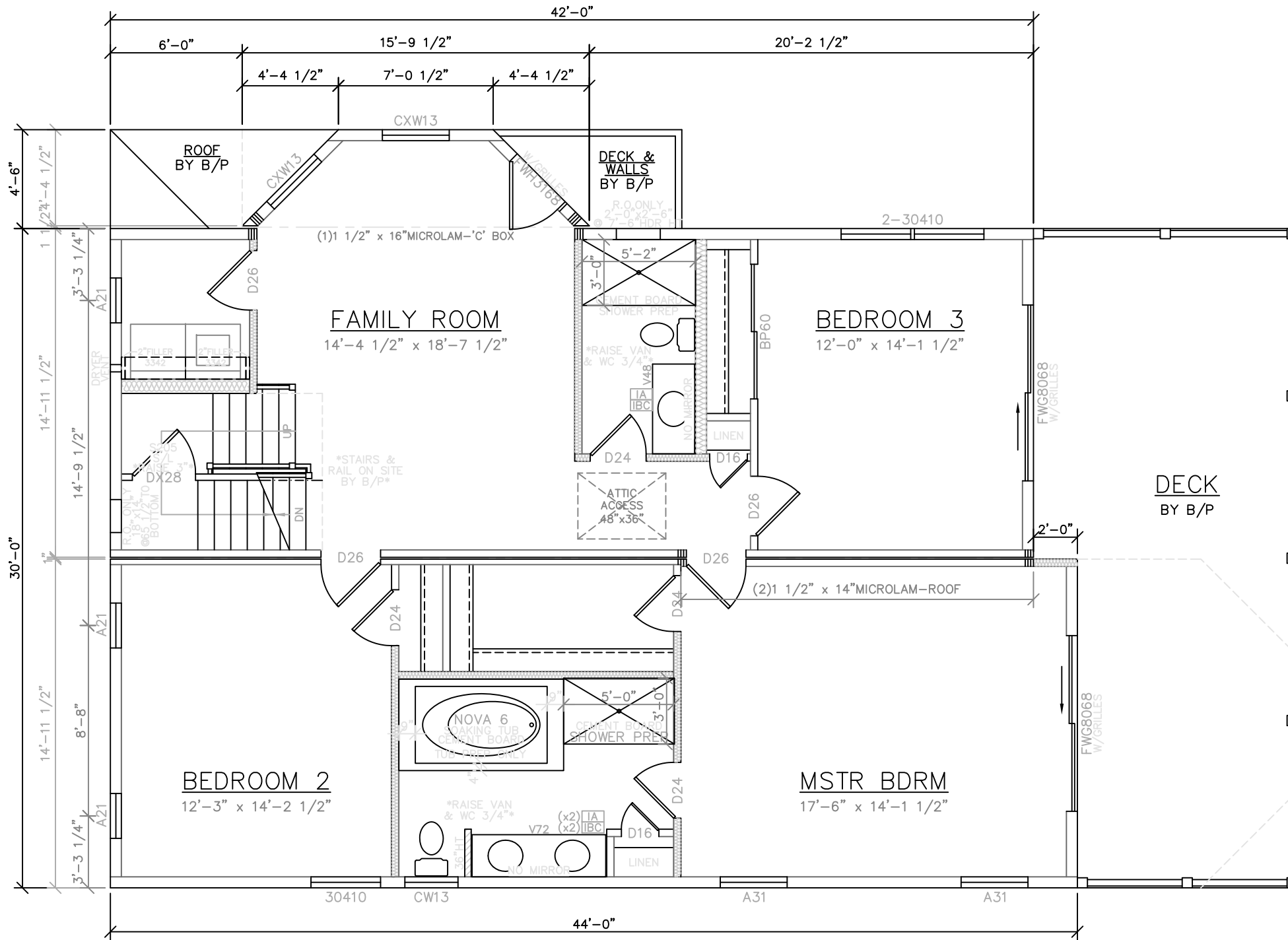
COLONIAL CTM-R ELEVATIONS

Westchester Modular Homes Inc
30 Reagans Mill Road, Wingdale, New York, 12594
Tel (845)832-9400 Fax (845)832-6698

F

C

D



ANDERSEN STORMWATCH WINDOWS W/ GRILLES IN TOP SASH ONLY
 SOLID SMOOTH CHEYENNE DOORS
 UPGRADE BASE RAISED 3/4" & TACKED & WINDSOR CASING

1,342 S.F.
 2nd. FLR.

ALL WINDOWS & DOORS
 NEW JERSEY FLASHING

FRONT

LIGHT & VENTILATION SCHEDULE (SF)			
ROOM	AREA	LIGHT SUPPLIED	VENT SUPPLIED
FAMILY ROOM	268	24.6	29.53
MSTR BDRM	247	42.9	23.60
BEDROOM 2	174	16.4	7.80
BEDROOM 3	170	56.7	33.40

* DESIGNED TO THE FOLLOWING:
 -2009 INTERNATIONAL RESIDENTIAL CODE, NJ AMENDMENTS
 -2009 NAPHCC NATIONAL STANDARD PLUMBING CODE, NJ AMENDMENTS
 -2008 NATIONAL ELECTRICAL CODE, NJ AMENDMENTS
 -2009 INTERNATIONAL ENERGY CONSERVATION CODE, NJ AMENDMENTS

SEE STANDARD NOTES & DETAILS DWG #8

USE GROUP: R5	BUILDER: HOMEOWNER:	SERIAL No. 11157	THIRD PARTY INSPECTION AGENCY
CONST. TYPE: VB		PRODUCTION No. 5909	PE / RA
DESIGNER: V.GIORGIO		REVISION	
DATE: 01/04/12		DATE	
SCALE: 1/4" = 1'-0"		CHECK	
PAGE: 3B			

COLONIAL CTM-R
SECOND FLOOR PLAN

Westchester Modular Homes Inc
 30 Reagans Mill Road, Wingdale, New York, 12594
 Tel (845)832-9400 Fax (845)832-6698